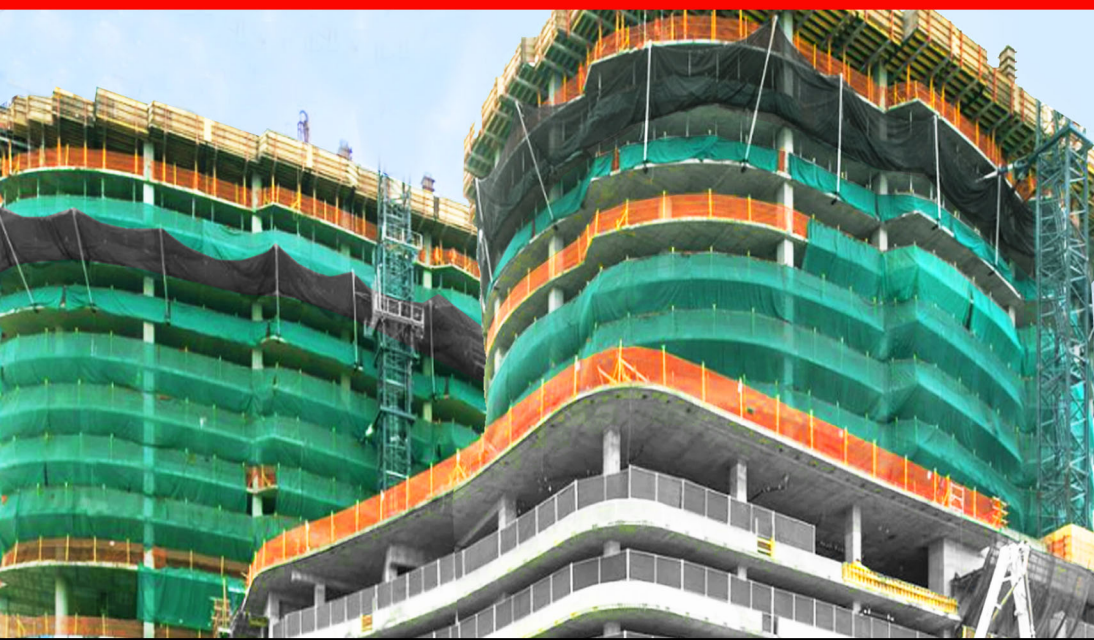


# EAGLE



## EDUCATIONAL RESOURCES



*Product Training Videos*



*FAQs: Got Questions? We've got answers!*



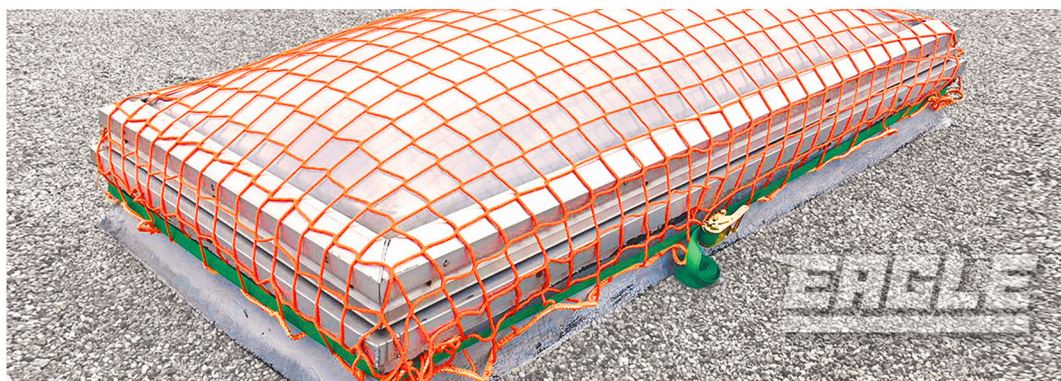
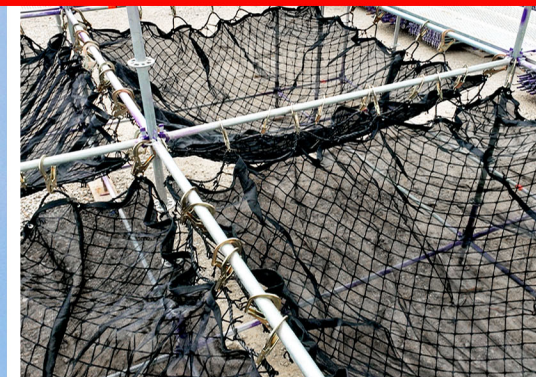
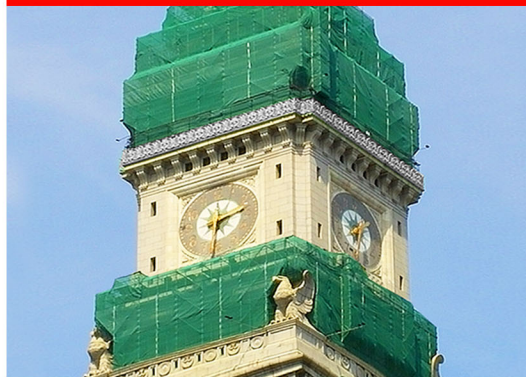
*Best Practices & Use Cases*

**SCAN TO CHECK OUT OUR  
DROPPED OBJECT SOLUTIONS**



## CUSTOM NETTING SOLUTIONS

*Eagle has the expertise to customize a netting solution precisely suited to your specific requirements at the jobsite!*



## DROPPED OBJECT PREVENTION

### Netting Solutions

800-266-8246

➤ [EAGLEIND.COM](http://EAGLEIND.COM)

**JOBSITE PROTECTION**



## DEBRIS NETTING



## HEAVY DUTY NETTING

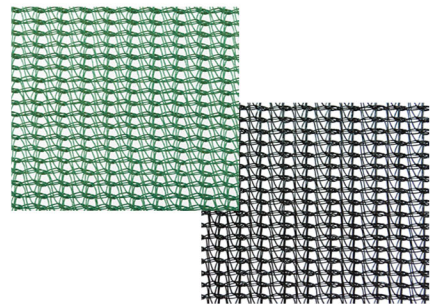


## SPECIALTY SOLUTIONS



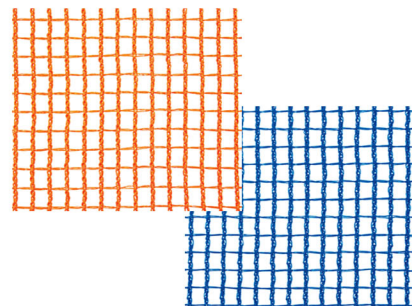
### BUILDING ENCLOSURES SCAFFOLD WRAP GUARDRAIL SAFETY

- Contains debris, tools, & jobsite materials
- Protects workers & pedestrians from falling objects
- Provides a visual safety barrier
- Open knit mesh allows air flow yet still contains small debris



**1/16" HOLE OPENINGS**

\* Flame & Non-Flame Retardant



**1/4" HOLE OPENINGS**

\* Flame Retardant



### HEAVY DUTY DEBRIS NET

**NET RATING OPTIONS**  
2,000 lb. 5,000 lb. 10,000 lb.

- Installs vertically or horizontally
- Meets OSHA debris protection regulations
- Prevents tools & debris from falling at heights

### PERSONNEL SAFETY NET

**17,500 LB. DROP LOAD RATING**

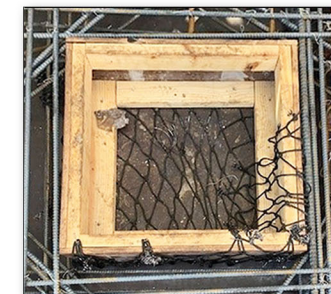
- Provides leading edge fall & drop prevention
- Meets OSHA standards for safety & fall protection standards
- Prevents construction debris & tools from falling



### DROP OBJECT MAT

**1/16" HOLE OPENINGS**

- Heavy duty black vinyl mesh used over grating
- Temporary work mat for drop objects
- Easy to deploy, fold, & reuse



### POUR-IN-PLACE NET

**13,000 LB. DYNAMIC LOAD RATING**

- Fall & drop protection netting for floor openings in concrete construction
- Complies with OSHA 1926.504(b)(4)

**1** Install netting around rebar with nylon cable ties.

**2** Pour concrete around netting & rebar frame.

**3** When concrete is dry simply cut netting flush with concrete.