

EAGLE

POUR-IN-PLACE SAFETY NET

PPN SERIES



**FALL PROTECTION NETTING FOR
FLOOR OPENINGS THAT PRESENT A
FALL-THROUGH HAZARD IN
CONCRETE CONSTRUCTION**

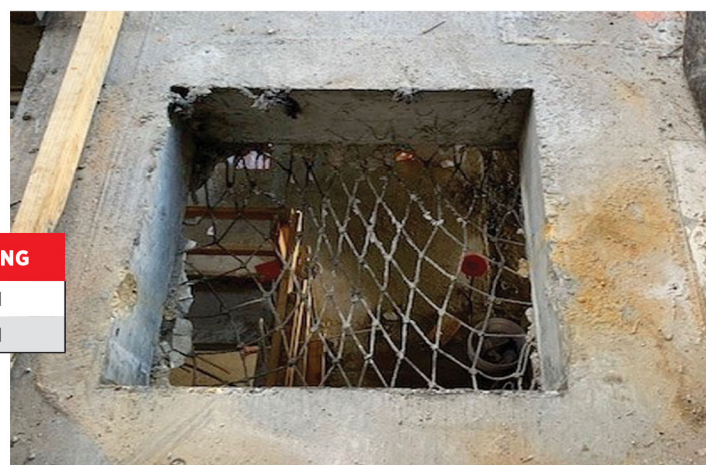
FLOOR OPENING SAFETY PROTECTION

- High tenacity knotted nylon net
- Mesh Size: 3.5" diamond mesh
- Net Strength: 1,300 lb. dynamic load rating
- Net Size: 8' x 50' 8' x 100'
- Easily cut net to custom size
- Complies with OSHA 1926.504(b)(4)
- Standard & custom sizes available



APPLICATIONS & BENEFITS

- Easy to install with nylon cable ties every 1' ft.
- Protect personnel from falling through concrete floor openings *
- Contain tools, debris, & materials from falling through floor openings
- Netting used to cover stairway, elevator shaft, & duct openings
- Easy to remove when net is no longer required



PPN SERIES

NET SIZE	NET COLOR	MESH SIZE	ITEM #	PACKAGING
8' X 50'	BLACK	3.5" DIAMOND	PPN-0850	1 EACH
8' X 100'	BLACK	3.5" DIAMOND	PPN-08100	1 EACH

* Other fall protection solutions may be required for shaft openings with existing protruding sharp angles that may cut or interfere with the function of the net. Please review the installation guide before use.

POUR-IN-PLACE PROCESS

1. Lay the net across the opening and under the form, extending about two feet or until the netting reaches beyond the rebar on all sides.
2. Attach net with nylon cable ties to the rebar every 1 ft. as a temporary hold so that concrete may be poured around it.
3. When concrete is dry, the net is locked in place until the opening is no longer a hazard.
4. When the netting is no longer needed, removal is relatively quick and easy by cutting it away flush to the concrete.

